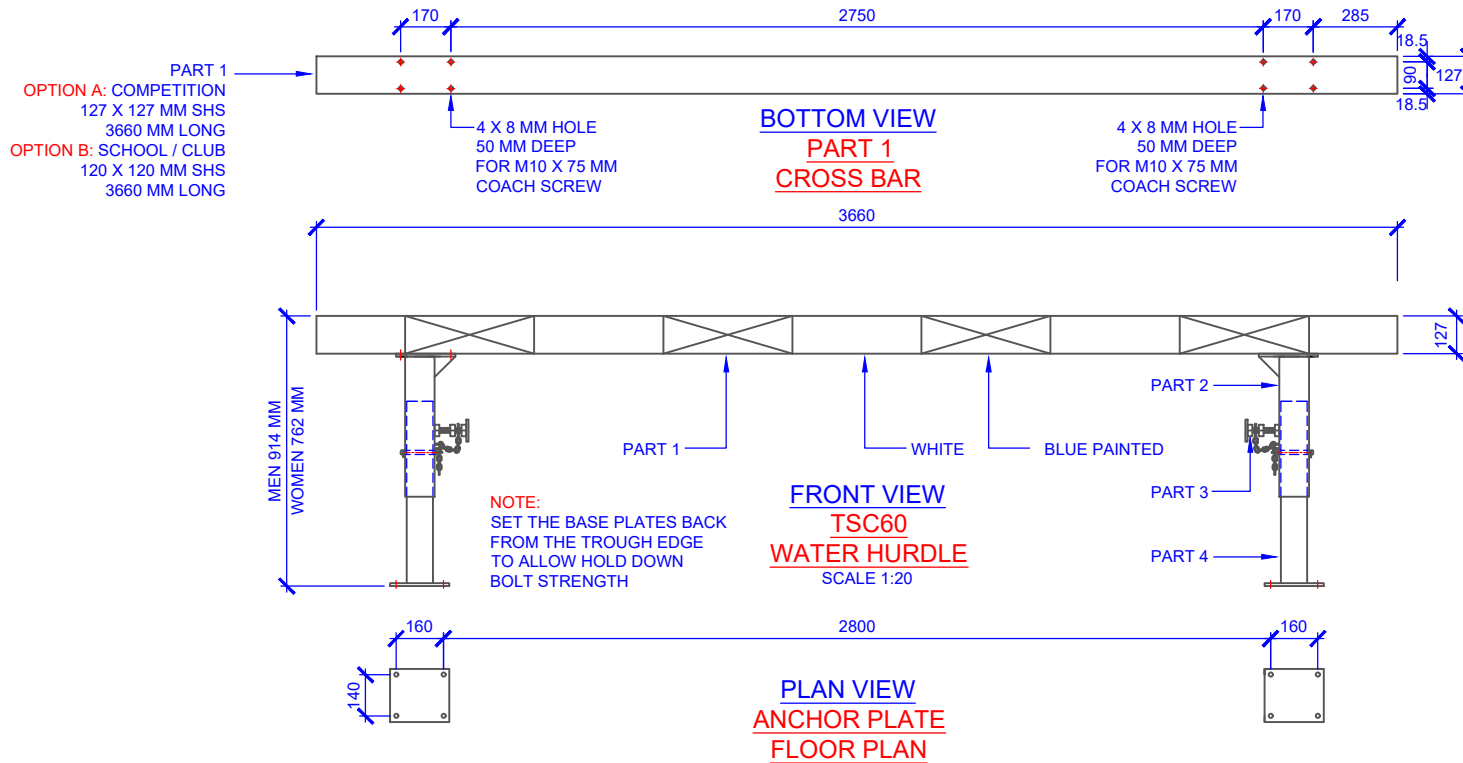


# ASSEMBLY INSTRUCTIONS



# COMPONENTS

QTY	ITEM
2	BASE FRAME
2	UPRIGHT SLIDE
1	CROSS BAR
8	M14 FASTNERS
8	M10 X 75 MM COACH SCREW
-	-
-	-
-	-
-	-
-	-
-	-
-	-
-	-
-	-
-	-
-	-

TITLE: <b>TSC60 ASSEMBLY</b>	
DRAWING NUMBER: - ASSEMBLY	
WEIGHT: -	REVISION: -



Oz Ring Pty Ltd  
Trading as:  
**Play Hard Sports Equipment**  
ABN 79 066 094 559  
24 Ern Harley Drive  
Burleigh Heads Qld 4220  
Phone: (07) 5593 4494  
Fax: (07) 5593 4338  
Website: [www.playhardsports.com.au](http://www.playhardsports.com.au)  
Email: [email@playhardsports.com.au](mailto:email@playhardsports.com.au)